

Fiscal Year 2019



PGATM
REACH

New England

ANNUAL REPORT

IMPROVING LIVES THROUGH THE GAME OF GOLF

TABLE OF CONTENTS

3	INFORMATION ABOUT PGA REACH New ENGLAND
4	STATEMENT FROM LEADERSHIP
5	PGA REACH New ENGLAND Pillars
6	PGA REACH New ENGLAND BOARD OF DIRECTORS / STAFF
7	PGA REACH New ENGLAND PARTNERS
8	YOUTH Pillar: NEPGA JUNIOR TOUR AND SCHOLARSHIPS
9	YOUTH Pillar: DRIVE, CHIP & PUTT AND PGA JR. LEAGUE
10	MILITARY Pillar: PGA HOPE
11	MILITARY Pillar: PGA HOPE
12	DIVERSITY AND INCLUSION Pillar
13	GOLF IN HOSPITALS PROGRAM
14	NEPGA PROFESSIONAL GRANT PROGRAM
17	2019 SUPPORTING EVENTS
18	READY TO BECOME A PARTNER?

INFORMATION

Founded in 2016, PGA REACH New England is the charitable foundation of the New England PGA Section.

PGA REACH New England has and will continually work to promote the game and improve the lives of thousands of children, military veterans and their families, as well as diverse populations through golf programs throughout New England each year. Although the NEPGA fosters competition, the New England PGA Charitable Foundation is designed to encourage fellowship, good sportsmanship, continued skill development, honesty, integrity and etiquette.



MESSAGE FROM OUR LEADERSHIP



Since the inception of PGA REACH New England in 2016, I have had a front row seat to watch it grow and impact many lives through the game of golf. The positive impact that it has had on countless communities across New England is a source of great pride for me. The amount of support that we get from our NEPGA Professionals has enabled our Foundation to continue to impact more people each year.

One such program is the PGA HOPE New England initiative. I have been operating Veterans Golf Clinics at Bangor Municipal Golf Course for years and with the creation of PGA HOPE, I felt that this was finally what we needed to get Veterans Golf on the forefront of people's minds. PGA HOPE was introduced in New England in 2018.

PGA HOPE New England has expanded right in front of our eyes and we are always impressed with the amount of support that it gets section-wide. We have grown to seven different facilities across New England and we are excited to watch it continue to impact Veterans' lives.

The continued growth of PGA REACH New England is contingent on the effort put forward by our New England PGA Professionals, Staff and Partners. Continued growth will ensure that our programs are able to positively impact communities around New England. If you are interested in volunteering, partnering, or donating please contact Mike Higgins at mhiggins@pgahq.com or myself at robjarvis@pga.com.

A handwritten signature in black ink, reading "Rob Jarvis".



FOUNDATION PILLARS

YOUTH

The Youth Pillar of PGA REACH New England seeks to improve and advance opportunities for youth. Introduction to the sport at an early age has proven to provide great opportunities in the areas of education, health and wellness and character building centered on the sport of golf.



DIVERSITY AND INCLUSION

The Diversity and Inclusion Pillar of PGA REACH New England seeks to provide people from all backgrounds an equal opportunity to be introduced to and enjoy the game of golf.

MILITARY

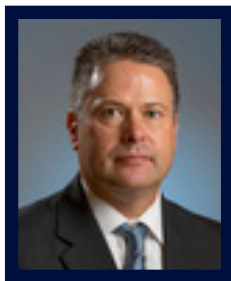
The Military Pillar of PGA REACH New England seeks to improve the physical, mental and social rehabilitation of our military heroes and their families through the sport of golf. The lifetime sport of golf has proven to be an excellent outlet for activity and competition, while allowing military personnel to assimilate back into their community through the social interaction the game provides.



FOUNDATION LEADERSHIP



Rob Jarvis, Foundation President



Allan Belden, NEPGA President



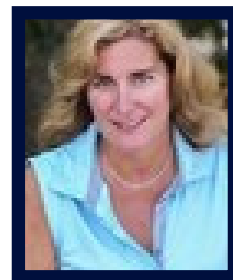
Rob Bibeau, Honorary President



Mike Bradshaw, NEPGA Vice President



John Fields, District Director



Joanne Flynn, District Director



Lou Rivers, District Director



Dave Tiedemann, District Director



Dan Gillis, District Director



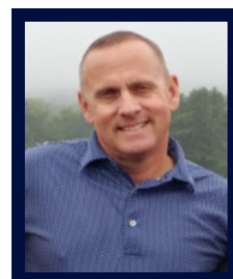
Dave Bennett
District Director



Dave Donnellan, District Director



Mark Aldrich, District Director



Doug Van Wickler
District Director

FOUNDATION STAFF



Michael Higgins
Executive Director



Christian Comeau
Foundation Coordinator



FOUNDATION PARTNERS



PGA REACH New England is proud to partner with Avidia Bank to support the NEPGA Junior Tour and for the Avidia Bank Credit Card Program. A percentage of any purchases made with the credit card are donated back to the NEPGA Foundation.



PGA REACH New England is proud to partner with Tournament Solutions to support the Wemyss Scholarship ProAm and through the 'Fore the Foundation Initiative' where 10% of all Tournament Solutions purchases in New England are donated back to the NEPGA Foundation.



PGA REACH New England is very proud to have Taylormade as the presenting partner for the NEPGA Junior Tour. Taylormade has been making top class golf equipment since 1979.



The NEPGA Junior Tour is very proud to have a partnership with Junior Golf Hub. Junior Golf Hub is the world's first website dedicated to Junior Golfers who want to get better, take their game to the next level and get recruited by college coaches.



PGA REACH New England is very proud to partner with Thor Guard for support of our NEPGA Junior Tour Events. Thor Guard is the world leader in lightning prediction and warning systems.



YOUTH PILLAR

NEPGA JUNIOR TOUR

The New England PGA Junior Tour, founded in 1995, established a goal to help develop younger golfers as well as provide outstanding competitions on a local level. In addition, this program strives to foster sportsmanship and integrity among its members.



2019 STATISTICS:

- 842 Junior Tour Members
- Over 4,000 Rounds Played
- 119 Events Across 5 States
- 2 Major Championships
- 5 Annual Scholarships totaling \$10,000 awarded to Junior Tour Members
- Tour Members participated in the Bloom For Good Bag Fundraiser program, raising over \$2,200 for PGA REACH New England.



SCHOLARSHIPS

Since its inception, PGA REACH New England has awarded over \$550,000 in college scholarships to the children, grandchildren and step-children of PGA Professionals, as well as junior golfers in New England.

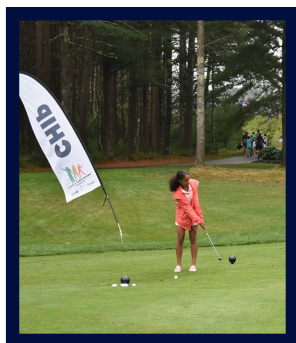
Under the direction of PGA REACH New England and its Scholarship Committee, we are aiming to continue growing the number of scholarships available, as well as the amount of funding available each year. The following scholarships were offered to students in 2019:

- George S. Wemyss Scholarship
- Bill Flynn Family Scholarship
- Gary Philbrick Scholarship
- NEPGA Junior Tour Scholarship
- Tom Murphy Scholarship
- Ted & Anne O'Rourke Scholarship
- Stan Baluik Scholarship
- Avidia Bank Foundation Scholarship
- Maine Chapter Scholarship
- Vermont Chapter Scholarship
- Cape Cod Junior Golf Scholarship



YOUTH PILLAR

The Drive, Chip & Putt competition aims to help younger generations begin their lifelong connection with golf by providing a fun, interactive platform for participants of all skill levels. This free youth golf development initiative welcomes boys and girls ages 7-15 to participate in separate divisions in four age categories. The New England PGA is proud to be one of the pilot sections for the Drive, Chip & Putt.



PGA Jr. League brings family and friends together around fun, team golf experiences with expert coaching from PGA and LPGA Professionals.

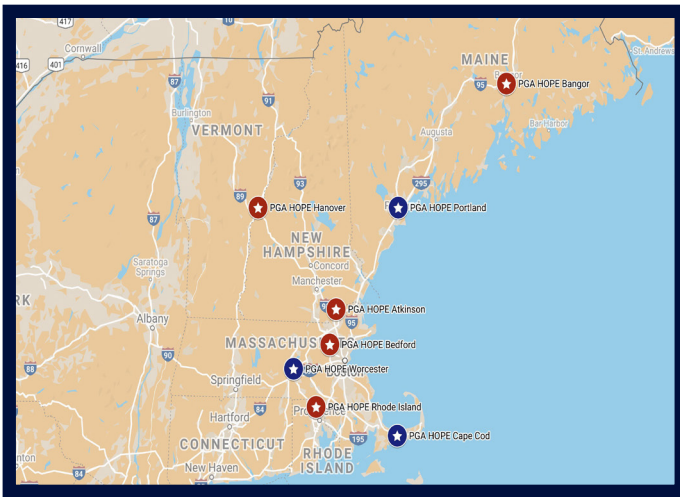
At its core, PGA Jr. League is a group of local golf teams who play a series of games against each other, utilizing a nurturing and social scramble format. The program is available to boys and girls of all skill levels. PGA and LPGA Professionals exclusively serve as captains and are responsible for creating a welcoming environment for all that encourages skill development and friendly competition. The 2020 postseason begins with the Section Championship at Stowe Acres Country Club on August 3rd.



MILITARY PILLAR

PGA HOPE

NEW ENGLAND



RED STAR: EXISTING PROGRAM FROM 2019

BLUE STAR: NEW PROGRAM FOR 2020

PGA HOPE NEW ENGLAND PROGRAMS:

- PGA HOPE Atkinson - Atkinson Resort & CC
- PGA HOPE Bangor - Bangor Municipal GC
- PGA HOPE Bedford - Patriot GC
- PGA HOPE Hanover - Hanover CC
- PGA HOPE Rhode Island - Kirkbrae CC
- PGA HOPE Cape Cod - Hyannis GC *
- PGA HOPE Portland - Riverside GC *
- PGA HOPE Worcester - Green Hill GC *

New program for 2020 season



The New England PGA HOPE (Helping our Patriots Everywhere) is a year round program designed to keep interested veterans playing golf, in order to embrace their mental, social, physical and emotional well-being. PGA REACH, the New England Section and PGA Professionals partner with local VA hospitals and military installations to initiate this program. The program includes a working partnership with physical therapists, introduction of the participant to the sport of golf, golf instruction, playing opportunities and social events. Using golf as an activity to assist them with their progress in rehab along with helping them to assimilate, mainstream with their families, into their communities and into life. PGA REACH New England supported five programs in 2019 across New England; and is proud to have grown to seven programs in 2020.



2019 IMPACT:

- Second Year of program in New England
- 5 Programs Across New England
- 185 Veterans and their families benefited from the program



MILITARY PILLAR

PGA HOPE CLINIC VISITS RHODE ISLAND VETERANS HOME



Louis Dolce Sr., is what many golfers might refer to as a range rat. On a Tuesday afternoon he shows up early to get loose, and starts hitting balls well before the rest of his group arrives at the facility. He heads to the putting green to roll some putts before heading back to take more full swings under the watchful eye of PGA Professional David Baluik (Glocester CC), who makes some minor tweaks between rips.

The Coast Guard Veteran who served during World War II has lived at Rhode Island Veterans Home since his wife passed away almost a year ago. When the New England PGA Foundation hosted a PGA HOPE clinic at the Home for its 190 residents, he didn't let a minute of the opportunity escape. He arrived early and waited patiently as the inflatable hitting area was set up, and lit up when he was given permission to start hitting golf shots 45 minutes early.

"I couldn't believe I'm going to hit a golf ball again," he said during a brief break between swings. "I have trouble with my balance, I have spinal stenosis in my back and I said 'Jeez I'll never do it,' but I warmed up and it was prime. I love it."

Louis is one of dozens of Veterans who participated in the two-hour PGA HOPE clinic, along with PGA Professionals Kevin Jean (MontaupCC), Ed Kirby (Aquidneck Club) and Baluik. The variety of golfers covered the spectrum. Some held a club for the first time, while others rekindled a love for the game that they didn't know they would experience again. Some swung freely on their own, others required help to stay standing. Some swung from a wheelchair, or with one arm, or with one arm from a wheelchair. But by day's end they had one thing in common: everybody left with a smile, with many asking for more.

"The line was so long, you should bring two next time," one Veteran said, motioning toward the inflatable hitting area. Meanwhile in another corner of the room, negotiations were being made between a small group of Veterans and the Home's Physical Education instructor to set up a permanent hitting station. "When are you coming back?" others asked.

The PGA HOPE Clinic will be returning to the Rhode Island Veterans Home during the 2020 Golf Season and we look forward to making this a regular program.



DIVERSITY AND INCLUSION PILLAR



BEACH, COUTOUMAS MAKE STRIDES WITH THE ARC

Bob Beach, PGA spent the last 31 years working at Braintree Municipal Golf Course, 28 of which he was the Head Golf Professional. He retired from that position at the end of 2018, and has continued to make a huge impact on the communities of greater Boston. One organization that Bob has worked with is The Arc of South Shore. The Arc works with intellectually and developmentally disabled people to help provide them with the care that they need as well as assist them in being more independent.

On September 13th, Bob and Paul Coutoumas, PGA of D.W. Field Golf Course in Brockton collaborated to host both the South Shore Chapter and the Brockton Chapter of The Arc for a clinic and lunch. The clinic started with an introduction to the equipment and safety tips, followed by some time spend on the putting green where Bob and Paul laid out different obstacles for the participants to putt around, through, under, over, etc. After they used the putting obstacles for a while, it was time for lunch and prizes. Each participant in the clinic got a boxed lunch courtesy of D.W. Field's 19th Hole Restaurant, along with some fun gifts to remember the day. The clinic was attended by over 30 individuals from The Arc Chapters, along with several staff members from The Arc Chapters as well.

The New England PGA is very proud to have dedicated PGA members like Bob and Paul working in our section. If you happen to run into either of them, please make sure to commend them on the impactful work they are doing within their communities.



CHILDREN'S HOSPITAL PROGRAM

In 2018, the NEPGA Foundation made a visit to the Boston Children's Hospital to provide some fun for children and their families visiting the world-renowned facility in the heart of Boston. Four PGA Professionals donated a couple of hours of their time to give lessons to the children who are staying at the facility. Patients and families from as close as Bridgewater as far as Saudi Arabia came through for some instruction with SNAG equipment, and left with some tee gifts courtesy of our Foundation partners Avidia Bank. The NEPGA is excited to make this a monthly program at the Boston location as well as satellite offices in Peabody & Waltham.



Boston Children's Hospital

Until every child is well™



2019 IMPACT:

- NEPGA Professionals made 3 visits to the Boston Children's Hospital to spend time with patients receiving treatment.
- Over 80 patients were impacted by this clinic
- The New England PGA Foundation is looking to expand this program to other Children's Hospitals around New England.




PGA
REACH
New England

NEPGA PROFESSIONAL GRANT PROGRAM

PGA REACH New England Professional Grant Program is a program open to all NEPGA Professionals to apply for up to \$2,000 to fund their community impact programs. In 2019 the New England PGA Foundation was proud to fund five different programs across New England.



Veterans Rehab Through Golf
Button Hole Golf Center



Cape Cod Junior Golf Outreach
Boys and Girls Club of Cape Cod



Future Trojans Golf Camps
Kebo Valley Golf Club



Veterans Golf Camp
Spector Golf



First Tee at Cochecho
Cochecho Country Club



Earn 3 points per dollar

with the

NEPGA Avidia Bank Mastercard®*



Apply today!

Visit nepga.avidiabank.com to apply online for the NEPGA Avidia Bank Mastercard.*

*The Mastercard rate for which we approve you will be based on your creditworthiness and other factors.

**Transactions excluded from point calculation include cash advances, ATM withdrawals, convenience checks, and balance transfers, any fees and card-related charges posted to a Card account, tax payments or any unauthorized charges or transactions. Avidia Bank is not affiliated with any retailer participating in the bonus point program. Avidia Bank reserves the right to change the program at any time.

Generous rewards program

- 16,000 points after initial purchase and annually thereafter
- Earn 3 points per dollar.**
- No cap on points earned.
- Redeem points for merchandise, cash and gift cards.

Benefits

- No annual fee
- No balance transfer fee
- Zero liability
- ID theft protection
- % of each purchase is donated to the NEPGA Foundation



Avidia Bank

Honest to goodness™

For detailed rate and fee information visit avidiabank.com/personal/nepga



'FORE THE FOUNDATION'



www.tournamentsolutions.com

10% OF ALL
**Tournament
Solutions**

SALES WITHIN
NEW ENGLAND
WILL
BENEFIT



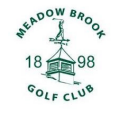
www.nepga.com/foundation

2019 SUPPORTING EVENTS

FOUNDATION FOURSOMES AUCTION

PGA REACH New England is auctioning off foursomes at participating clubs around the section. Last year 95 clubs participated and we raised over \$26,000 towards our foundation.

- Foursomes are put up for auction, and are advertised through the NEPGA website, on social media, and through word of mouth.
- All proceeds of this auction go to support PGA REACH New England programming.



WEMYSS SCHOLARSHIP PRO-AM

PGA REACH New England annually hosts a Pro-Am geared towards raising money for PGA REACH New England Scholarships. The 2019 edition of this event took place on October 23rd at Eastward Ho! Country Club in Chatham, MA. Teams gathered despite challenging weather for a fun day of golf and giving back, raising in excess of \$20,000 to support higher education. For the second year, partner Tournament Solutions presented a check to PGA REACH New England, concluding their season-long program which donates 10% of sales within New England to PGA REACH New England. Starting in 2020, this event will be rebranded as the PGA REACH New England Pro-Am.

OMEGA WATCH RAFFLE

In 2019, PGA REACH New England partnered with OMEGA to raffle off a men's watch to raise money for our PGA HOPE Programs. Over \$6,000 worth of tickets were sold in this auction and the Foundation raised over \$3,200 for PGA HOPE.



READY TO BECOME A PARTNER?



GET IN TOUCH TODAY!

Please contact Michael Higgins at (508) 869-0000 or at mhiggins@pgahq.com to discuss partnership opportunities.

81C Shrewsbury Street
PO Box 743
Boylston, MA 01505
(508) 869-0000

